

Guaranteed value for high-powered tractors



48

**160 HP
and over**

MICHELIN MACHXBIB



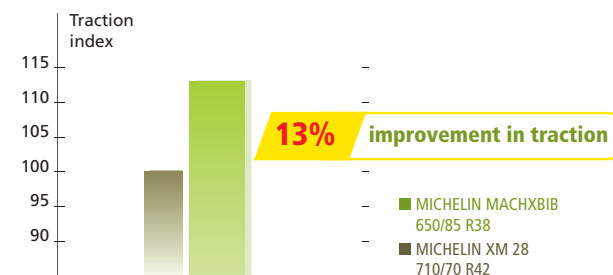
Service life : up to
1.5 years longer *

Sizes

580/70 R26 TL 149A8/146B XM27	NEW	710/70 R38 TL 171D
620/70 R26 TL 153A8/150B XM27	NEW	800/70 R38 TL 173D
600/65 R28 TL 154D		650/75 R38 TL 169A8/169B
NEW 600/70 R28 TL 157D		650/85 R38 TL 173A8/173B
NEW 600/70 R30 TL 152D		900/50 R42 TL 168D
NEW 710/55 R30 TL 153D	NEW	900/50 R42 TL 168A8/168B
650/75 R32 TL 159A8/156B XM28		NEW 710/70 R42 TL 173D
680/75 R32 TL 164A8/161B XM28		620/70 R46 TL 162A8/162B
710/75 R34 TL 168A8/165B XM28		

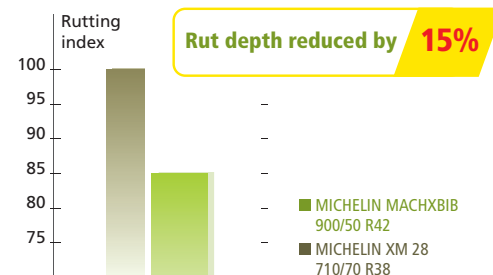
* 710/70 R38 MACHXBIB compared with the XM 28

Maximum productivity when ploughing

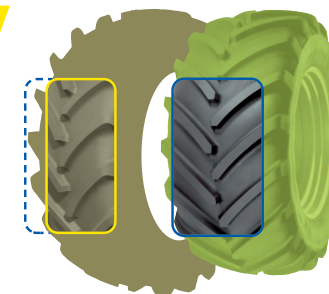


Source: MICHELIN test and research center (Ladoux)

Soil protection even under heavy loads



Under a load of 5,990 kg
Source: MICHELIN test and research center (Ladoux)



MICHELIN XM 28 710/70 R38
MICHELIN MACHXBIB 900/50 R42

Same loads with adapted pressures
Source: MICHELIN test and research center (Ladoux)

Increased speed when transporting and greater load capacity in fields

- D index 65 km/h (see new sizes).

Characteristics of MICHELIN tyres for high-powered tractors MICHELIN MACHXBIB (Plus XM27 & XM28)

50

160 HP
and over

Ø inches	Description	CAI	Tyre characteristics				Rim widths ⁽¹⁾ inches	Tube ⁽²⁾ litres	75% internal volume litres		Pressure (bar) and (psi) – Load per tyre in kg ^{(3) - (4)}															
			S mm	D mm	R' mm	R.C. mm					Bar Psi	0.40 6	0.60 9	0.80 12	1.00 15	1.20 17	1.40 20	1.60 23	1.80 26	1.90 28	2.00 29	2.20 32	2.40 35	2.60 38	2.70 39	2.80 41
26	580/70 R26 149A8/146B TL XM27	123878	590	1435	630	4300	DW18L DW16L	716	390		10 km/h 20 km/h 25 km/h 30 km/h 40 km/h 50 km/h		2 660 2 600 2 340 2 090 2 110 1 980	3 000 2 880 2 595 2 365 2 340 2 185	3 345 3 160 2 850 2 645 2 565 2 390	3 685 3 440 3 100 2 925 2 795 2 590	4 025 3 720 3 355 3 200 3 020 2 795	4 370 4 000 3 610 3 480 3 250 3 000	4 710 4 480							
	620/70 R26 153A8/150B TL XM27	123880	629	1500	643	4469	DW20B (A) DW18L	717	467		10 km/h 30 km/h 40 km/h 50 km/h		2 980 2 345 2 370 2 210	3 365 2 660 2 625 2 440	3 750 2 970 2 880 2 665	4 135 3 285 3 140 2 895	4 520 3 595 3 395 3 120	4 905 3 910 3 650 3 350	5 290 5 480							
28	600/65 R28 154D TL MACHXBIB	055335	615	1502	666	4449	DW20B (A) DW18L W18L	717	424		40 km/h Dual 10 km/h 30 km/h 40 km/h 50 km/h 65 km/h	1 415 1 690	1 700 2 010	1 985 2 335	2 270 3 315 2 655 2 580	2 525 3 660 2 975 2 870	2 780 4 005 3 300 3 160	3 035 4 350 3 790 3 450	3 180 4 565 3 880 3 615	3 250 4 670 3 965 3 695	3 325 4 775 3 965 3 780	3 470 4 990 4 140 3 940	3 615 5 205 4 310 4 105	5 415	5 525	5 630
	600/70 R28 157D TL MACHXBIB	438598	623	1586	706	4694	DW20B (A) DW18L	717	495		40 km/h Dual 10 km/h 30 km/h 40 km/h 50 km/h 65 km/h	1 560 1 860	1 870 2 230	2 180 2 600	2 490 3 630 2 970 2 825	2 800 4 045 3 340 3 180	3 110 4 460 3 710 3 530	3 420 4 875 4 080 3 885	3 560 5 175 4 245 4 040	3 630 5 325 4 330 4 120	3 700 5 475 4 410 4 200	3 835 5 655 4 580 4 360	3 975 5 830 4 745 4 515	6 010	6 100	6 190
30	600/70 R30 152D TL MACHXBIB	334318	613	1605	706	4745	DW20B (A) DW18L	737	456		40 km/h Dual 10 km/h 30 km/h 40 km/h 50 km/h 65 km/h	1 605 2 500 1 915	1 930 3 000 2 300	2 250 3 250 2 680	2 565 3 750 3 060	2 885 4 175 3 440	3 200 4 600 3 820	3 520 5 025 4 200	5 230 5 330							
	710/55 R30 153A8/153B TL MACHXBIB	122713	684	1516	673	4491	DW23B (A)		506		40 km/h Dual 10 km/h 30 km/h 40 km/h 50 km/h	1 490 2 350 1 870	2 085 3 230 2 540	2 310 3 575 2 815	2 535 3 920 3 090	2 760 4 270 3 360	2 985 4 615 3 635	3 210 4 960 3 910	5 305 5 480							
	710/55 R30 153D TL MACHXBIB*	992342	684	1516	673	4491	DW23B (A)		506		40 km/h Dual 10 km/h 30 km/h 40 km/h 50 km/h 65 km/h	1 590 2 475 1 900	1 905 2 960 2 270	2 225 3 370 2 655	2 550 3 775 3 040	2 870 4 185 3 430	3 195 4 590 3 815	3 515 5 000 4 200	5 320 5 480							

⁽¹⁾ The reference rim is shown in bold type.⁽²⁾ KLEBER tube code.

* Under development. Please contact us for availability.

IMPORTANT: the inflation pressure must always be appropriate
for the load per tyre, the speed of travel and the work to be done.

40 Dual: Twin fitment use.

10: max speed 10 km/h (low torque) e.g. soil treatment machines in the field.

30: use in the field at higher torque and travel on the road up to a maximum
speed of 30 km/h.

40: use on the road up to a maximum speed of 40 km/h.

50: use on the road up to a maximum speed of 50 km/h.

⁽³⁾ For ploughing and other applications subject to high torque use the
30 km/h row.⁽⁴⁾ 0.4 and 0.5 bar (6 and 7 psi) for work at low torque.

Characteristics of MICHELIN tyres for high-powered tractors MICHELIN MACHXBIB (Plus XM27 & XM28)

**160 HP
and over**

Ø inches	Description	CAI	Tyre characteristics				Rim widths ⁽¹⁾ inches	Tube ⁽²⁾	75% internal volume litres		Pressure (bar) and (psi) – Load per tyre in kg ^{(3) - (4)}															
			S mm	D mm	R' mm	R.C. mm					Bar Psi	0.40 6	0.60 9	0.80 12	1.00 15	1.20 17	1.40 20	1.60 23	1.80 26	1.90 28	2.00 29	2.20 32	2.40 35	2.60 38	2.70 39	2.80 41
32	650/75 R32 159A8/156B TL XM28 (24,5 R32)	123512	638	1821	790	5367	DW21B (A) DW20B (A)	831	660		40 km/h Dual	1 815	2 500	2 770	3 040	3 310	3 580	3 850	6 355	6 560						
											10 km/h	2 820	3 870	4 285	4 700	5 110	5 525	5 940								
											30 km/h	2 200	3 040	3 370	3 695	4 025	4 350	4 680								
											40 km/h		2 840	3 150	3 455	3 765	4 070	4 380								
	680/75 R32 164A8/161B TL XM28	123582	675	1865	819	5512	DW21B (A) DW20B (A)	831	742		40 km/h Dual	1 970	2 860	3 170	3 475	3 785	4 090	4 400	7 265	7 500						
											10 km/h	3 230	4 430	4 900	5 375	5 845	6 320	6 790								
											30 km/h	2 510	3 480	3 855	4 230	4 600	4 975	5 350								
											40 km/h		3 250	3 600	3 950	4 300	4 650	5 000								
	50 km/h										3 050	3 365	3 680	4 000	4 315	4 630										
34	710/75 R34 168A8/165B TL XM28	123216	687	1929	842	5745	DW23B (A) MW23B (A)	765	862		40 km/h Dual	2 140	3 205	3 550	3 895	4 240	4 585	4 930	8 135	8 400						
											10 km/h	3 610	4 960	5 490	6 020	6 550	7 075	7 605								
											30 km/h	2 820	3 890	4 310	4 730	5 150	5 570	5 990								
											40 km/h		3 640	4 030	4 425	4 815	5 210	5 600								
	50 km/h										3 400	3 750	4 100	4 450	4 800	5 150										
38	650/75 R38 169A8/169B TL MACHXBIB	219467	664	1948	880	5761	DW23B (A) MW23B (A)	804	730		40 km/h Dual	1 965	2 525	3 085	3 645	3 860	4 075	4 290	4 495	4 595	4 700	4 900	5 105	8 365	8 530	8 700
											10 km/h				5 730	6 050	6 370	6 690	7 025	7 190	7 360	7 695	8 030			
											30 km/h	2 410	3 075	3 745	4 410	4 680	4 950	5 220	5 470	5 590	5 715	5 960	6 210			
											40 km/h				4 140	4 385	4 630	4 875	5 105	5 220	5 340	5 570	5 800			
	50 km/h										4 140	4 385	4 630	4 875	5 105	5 220	5 340	5 570	5 800							
	650/85 R38 173A8/173B TL MACHXBIB	118628	686	2063	924	6092	DW23B (A) MW23B (A)	804	859		40 km/h Dual	2 200	2 830	3 455	4 085	4 320	4 560	4 795	5 025	5 140	5 260	5 490	5 720	9 375	9 560	9 750
											10 km/h				4 620	4 780	5 140	5 500	5 875	6 060	6 250	6 425	6 600			
											30 km/h	2 700	3 445	4 195	4 940	5 245	5 545	5 850	6 125	6 265	6 400	6 680	6 955			
											40 km/h				4 640	4 910	5 180	5 450	5 710	5 845	5 975	6 240	6 500			
	50 km/h										4 640	4 910	5 180	5 450	5 710	5 845	5 975	6 240	6 500							
	710/70 R38 171D TL MACHXBIB	708197	713	1961	866	5804	DW23B (A) MW23B (A) DW25B (A) MW25B (A)	804	815		40 km/h Dual	2 340	2 800	3 260	3 720	4 185	4 645	5 105	5 310	5 410	5 515	5 720	5 925	8 960	9 095	9 225
											10 km/h	3 640	4 250	4 860	5 470	6 010	6 550	7 095	7 635	7 905	8 175	8 440	8 700			
											30 km/h	2 790	3 340	3 890	4 440	4 995	5 545	6 095	6 340	6 460	6 580	6 825	7 070			
											40 km/h		3 190	3 720	4 255	4 770	5 290	5 805	6 040	6 155	6 270	6 500	6 735			
	50 km/h										3 060	3 570	4 080	4 575	5 070	5 565	5 790	5 900	6 010	6 230	6 455					
			65 km/h									3 350	3 840	4 325	4 810	5 300	5 510	5 620	5 725	5 940						
	800/70 R38 173D TL MACHXBIB			887730	809	2066	899	6093	DW25B (A) MW25B (A) DW27B (A)		1071		40 km/h Dual	2 825	3 400	3 970	4 540	5 115	5 690	6 260	9 395	9 750				
		10 km/h	4 400										5 115	5 825	6 540	7 255	7 965	8 680								
		30 km/h	3 375										4 060	4 740	5 425	6 110	6 790	7 475								
		40 km/h											3 860	4 510	5 165	5 815	6 470	7 120								
	50 km/h										3 700	4 325	4 950	5 575	6 200	6 825										
			65 km/h									4 115	4 710	5 305	5 905	6 500										

⁽¹⁾ The reference rim is shown in bold type.⁽²⁾ KLEBER tube code.

* Under development. Please contact us for availability.

IMPORTANT: the inflation pressure must always be appropriate
for the load per tyre, the speed of travel and the work to be done.

40 Dual: Twin fitment use.

10: max speed 10 km/h (low torque) e.g. soil treatment machines in the field.

30: use in the field at higher torque and travel on the road up to a maximum
speed of 30 km/h.

40: use on the road up to a maximum speed of 40 km/h.

50: use on the road up to a maximum speed of 50 km/h.

⁽³⁾ For ploughing and other applications subject to high torque use the
30 km/h row.⁽⁴⁾ 0.4 and 0.5 bar (6 and 7 psi) for work at low torque.

Characteristics of MICHELIN tyres for high-powered tractors MICHELIN MACHXBIB (Plus XM27 & XM28)

**160 HP
and over**

Ø inches	Description	CAI	Tyre characteristics				Rim widths ⁽¹⁾ inches	Tube ⁽²⁾	75% internal volume litres		Pressure (bar) and (psi) – Load per tyre in kg ⁽³⁾ - ⁽⁴⁾																
			S mm	D mm	R' mm	R.C. mm					Bar Psi	0.40 6	0.60 9	0.80 12	1.00 15	1.20 17	1.40 20	1.60 23	1.80 26	1.90 28	2.00 29	2.20 32	2.40 35	2.60 38	2.70 39	2.80 41	
42	710/70 R42 173D TL MACHXBIB	790388	721	2088	932	6195	DW23B (A) MW23B (A) MW25B (A) DW25B (A)	836	872		40 km/h Dual 10 km/h 30 km/h 40 km/h 50 km/h 65 km/h	2 410 3 750 2 875	2 910 4 375 3 470	3 405 5 000 4 065	3 905 5 625 4 660	4 405 6 210 5 250	4 900 6 795 5 845	5 400 7 380 6 440	5 615 7 965 6 700	5 725 8 260 6 830	5 830 8 550 6 960	6 050 8 850 7 215	6 265 9 150 7 475	9 450	9 600	9 750	
	900/50 R42 168A8/168B TL MACHXBIB	122703	853	1947	862	5815	DW27B (A) DW28B (A)	836	922		40 km/h Dual 10 km/h 30 km/h 40 km/h 50 km/h	2 265 3 875 2 725	2 705 4 375 3 250	3 150 5 020 3 800	3 595 5 670 4 350	4 040 6 315 4 900	4 485 6 965 5 450	4 930 7 610 6 000	8 205	8 500							
	900/50 R42 168D TL MACHXBIB*	832458	853	1947	862	5815	DW27B (A) DW28B (A)	836	922		40 km/h Dual 10 km/h 30 km/h 40 km/h 50 km/h 65 km/h	2 455 3 825 2 930	2 940 4 575 3 510	3 430 5 195 4 095	3 925 5 810 4 680	4 415 6 430 5 270	4 910 7 045 5 855	5 400 7 665 6 440	8 155	8 400							
46	620/70 R46 162A8/162B TL XM28	122723	621	2061	926	6122	DW20B (A)		697		40 km/h Dual 10 km/h 30 km/h 40 km/h 50 km/h	1 865 3 060 2 390	2 720 4 200 3 300	3 010 4 650 3 655	3 305 5 100 4 010	3 595 5 550 4 370	3 890 6 005 4 725	4 180 6 455 5 080	6 905	7 130							

⁽¹⁾ The reference rim is shown in bold type.⁽²⁾ KLEBER tube code.

* Under development. Please contact us for availability.

IMPORTANT: the inflation pressure must always be appropriate
for the load per tyre, the speed of travel and the work to be done.

40 Dual: Twin fitment use.

10: max speed 10 km/h (low torque) e.g. soil treatment machines in the field.

30: use in the field at higher torque and travel on the road up to a maximum
speed of 30 km/h.

40: use on the road up to a maximum speed of 40 km/h.

50: use on the road up to a maximum speed of 50 km/h.

⁽³⁾ For ploughing and other applications subject to high torque use the
30 km/h row.⁽⁴⁾ 0.4 and 0.5 bar (6 and 7 psi) for work at low torque.