

## 6" (Ø 238 mm) Technical Information

### Tank Unit (Adapter) and Hose Unit (Coupler)



Material	Maximum Working Pressure	Test Pressure	Minimum Burst Pressure
Aluminium	10 bar / 145 psi	15 bar / 218 psi	50 bar / 726 psi
Stainless Steel	16 bar / 232 psi	24 bar / 348 psi	80 bar / 1160 psi

### Connections

6" in BSP, NPT and flanged inlet.

### Applications

Recommended for marine bunkering, ship to shore transfer, ship to ship transfer and ship to rig transfer or on any application where spillage needs to be minimized.

### Media

**Petroleum products:** gasoline, diesel, oil etc.

**Chemical products:** ethylene oxide, propylene oxide, acrylonitrile, butadiene, ammonia, vinyl chloride, toluene, xylene, sulphuric acid, phenol etc.

**Dry powder**

### Material of Body

Aluminium or stainless steel; other materials on request.

### Seals

Standard seals FPM (Viton®), EPDM, FFKM (Chemraz®, Kalrez®), NBR. Other on request.

### High Flow Rates / Low Pressure Drop

Allows maximum product transfer with minimal losses

### Recommended Maximum Flow Rates

4000 litres/minute (fuel)

### Selectivity

**- avoid mixing products**

To avoid product contamination caused by connecting a hose unit to the wrong tank unit, selective versions of the hose and tank units are available.

Each unit has a number of selective positions, designated by a coded part number according to the coupling size – specify when placing order. See page 32 ff.

### Interchangeability

Compatible with couplings of other manufacturers.

### Hose Unit with Integrated Swivel

All hose units are supplied with an integrated swivel.

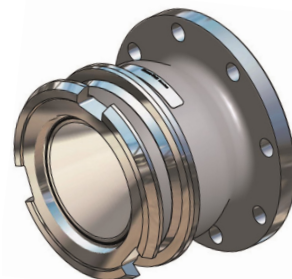
## 6" (Ø 238 mm) Tank Unit (Adapter) – Female Thread

Connection <sup>1)</sup> Inch/DN	Body Material <sup>2)</sup>	Seal		Weight ≈		Mann Tek Code No.
		O-Ring <sup>3)</sup>	Thread Seal	kg	lbs	
F 6" BSP	AI	Standard: <b>FPM/FKM</b> (Viton®) Other on request.	<b>PUR</b>	6,7	14.8	<b>T6110B1101B</b>
F 6" NPT			—	7,1	15.7	<b>T6111B1101</b>
F 6" BSP	SS		<b>PTFE</b>	15,7	34.6	<b>T6110B4401A</b>
F 6" NPT			—	17,6	38.8	<b>T6111B4401</b>



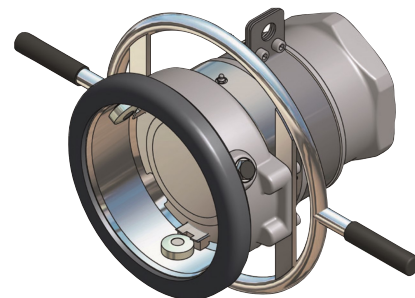
## 6" (Ø 238 mm) Tank Unit (Adapter) – Flanged Inlet

Flange <sup>1B)</sup>	Body Material <sup>2)</sup>	Seal <sup>3)</sup>	Weight ≈		Mann Tek Code No.
		O-Ring	kg	lbs	
DN 150 PN 10/16 Type A	AI	Standard: <b>FPM/FKM</b> (Viton <sup>®</sup> ) Other on request.	8,6	19.0	<b>T645B1101</b>
6" ASA 150			7,5	16.5	<b>T6100B1101</b>
DN 150 PN 10/16 Type B	SS		22,4	49.4	<b>T645B4401</b>
6" ASA 150			22,4	49.4	<b>T6100B4401</b>



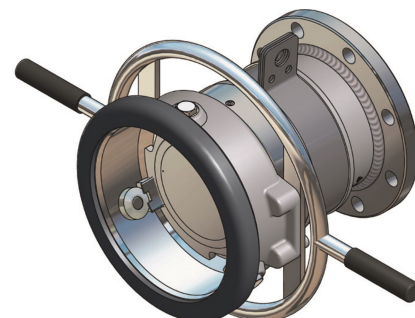
## 6" (Ø 238 mm) Hose Unit (Coupler) – Female Thread

Connection <sup>1)</sup> Inch/DN	Body Material <sup>2)</sup>	Seal		Weight ≈		Mann Tek Code No.
		O-Ring <sup>3)</sup>	Thread Seal	kg	lbs	
F 6" BSP	AI	Standard: <b>FPM/FKM</b> (Viton <sup>®</sup> ) Other on request.	<b>PUR</b>	22,3	49.2	<b>S6110B1101B</b>
F 6" NPT			—			<b>S6111B1101</b>
F 6" BSP	SS		<b>PTFE</b>			<b>S6110B4401A</b>
F 6" NPT			—	45,0	99.2	<b>S6111B4401</b>



## 6" (Ø 238 mm) Coupler – Flanged Inlet

Flange <sup>1B)</sup>	Body Material <sup>2)</sup>	Seal <sup>3)</sup>	Weight ≈		Mann Tek Code No.
		O-Ring	kg	lbs	
DN 150 PN 10/16 Type A	AI	Standard: <b>FPM/FKM</b> (Viton <sup>®</sup> ) Other on request.			<b>S645B1101</b>
6" ASA 150			25,9	57.1	<b>S6100B1101</b>
DN 150 PN 10/16 Type B	SS				<b>S645B4401</b>
6" ASA 150			49,5	109.1	<b>S6100B4401</b>



<sup>1A)</sup> F = Female thread, BSP = EN ISO 228, NPT = ANSI B1.20.1

<sup>1B)</sup> PN 10/16/25/40 = EN 1092 (types see page 44), ASA 150 = ANSI B16.5, 150 psi

<sup>2)</sup> Material: AI = Aluminium, SS = Stainless Steel

<sup>3)</sup> Standard seal FPM/FKM. Alternative materials, e.g. EPDM, Chemraz®, Kalrez®, NBR or HNBR on request

Viton® is registered trademark of DuPont, DuPont Elastomers.