

## 4" (Ø 164 mm) Technical Information

### Tank Unit (Adapter) and Hose Unit (Coupler)



### According to NATO STANAG 3756

Material	Maximum Working Pressure	Test Pressure	Minimum Burst Pressure
Aluminium	10 bar / 145 psi	15 bar / 218 psi	50 bar / 726 psi
Brass/Gunmetal	16 bar / 232 psi	24 bar / 348 psi	80 bar / 1160 psi
Stainless Steel	25 bar / 363 psi	37,5 bar / 544 psi	125 bar / 1813 psi

### Connections

4" in BSP, NPT and flanged inlet.

### Applications

Recommended for HiFlo-loading/unloading of rail tankers, aviation refuellers and road tankers. Also suitable for ship to shore transfer, ship to ship transfer and ship to rig transfer or on any application where spillage needs to be minimized.

### Media

**Petroleum products:** gasoline, diesel, oil etc.

**Chemical products:** ethylene oxide, propylene oxide, acrylonitrile, butadiene, ammonia, vinyl chloride, toluene, xylene, sulphuric acid, phenol etc.

**Gas:** vapor recovery/balance systems for various media.

**Dry powder**

### Material of Body

Aluminium, brass/gunmetal, stainless steel, Hastelloy and PEEK. Other materials on request.

### Seals

StandardSeals FPM (Viton®), EPDM, FFKM (Chemraz®, Kalrez®), NBR. Other on request.

### High Flow Rates / Low Pressure Drop

Allows maximum product transfer with minimal losses

### Recommended Maximum Flow Rates

3500 litres/minute (fuel)

### Selectivity

**- avoid mixing products**

To avoid product contamination caused by connecting a hose unit to the wrong tank unit, selective versions of the hose and tank units are available.

Each unit has a number of selective positions, designated by a coded part number according to the coupling size – specify when placing order. See page 32 ff.

### Interchangeability

Compatible with couplings of other manufacturers.

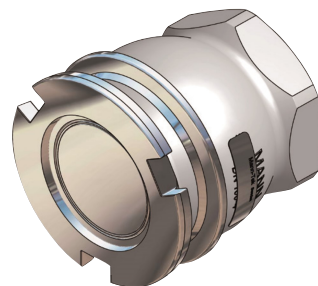
### Hose Unit with Integrated Swivel

All hose units are supplied with an integrated swivel.

## 4" (Ø 164 mm) Tank Unit (Adapter) – Female Thread

Connection <sup>1)</sup> Inch/DN	Body Material <sup>2)</sup>	Seal <sup>3)</sup>		Weight ≈		Mann Tek Code No.
		O-Ring	Thread Seal	kg	lbs	
F 4" BSP	AI	Standard: <b>FPM/FKM</b> (Viton <sup>®</sup> )	PUR	2,5	5.5	<b>T516A1101B</b>
F 4" NPT			—	2,8	6.2	<b>T517A1101</b>
F 4" BSP	GM		PUR	7,0	15.4	<b>T516D2201B</b>
F 4" NPT			—	7,7	17.0	<b>T517D2201</b>
F 4" BSP	SS	Other on request.	PTFE	6,0	13.2	<b>T516B4401A</b>
F 4" NPT			—	6,4	14.1	<b>T517B4401</b>

According to  
NATO STANAG 3756



<sup>1)</sup> F = Female thread, BSP = EN ISO 228, NPT = ANSI B1.20.1

<sup>2)</sup> Material: Al = Aluminium, GM = Gunmetal, SS = Stainless Steel

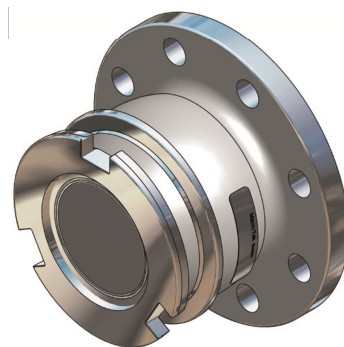
<sup>3)</sup> Standard seal FPM/FKM. Alternative materials, e.g. EPDM, Chemraz®, Kalrez®, NBR or HNBR on request

Viton® is a registered trademark of DuPont, DuPont Elastomers.

## 4" (Ø 164 mm) Tank Unit (Adapter)– Flanged Inlet

Flange <sup>1)</sup>	Body Material <sup>2)</sup>	Seal <sup>3)</sup>	Weight ≈		Mann Tek Code No.
		O-Ring	kg	lbs	
undrilled Ø 230 mm	AI	Standard: <b>FPM/FKM</b> (Viton®)	3,2	7.1	<b>T521D1101</b>
DN 100 PN 10/16 Type B			3,1	6.8	<b>T539D1101</b>
4" ASA 150			3,2	7.1	<b>T563D1101</b>
DIN 28459 'TW 3' / DN 100			2,6	5.7	<b>T566D1101</b>
4" TTMA			2,6	5.7	<b>T568D1101</b>
undrilled Ø 230 mm	GM				<b>T521D2201</b>
DN 100 PN 10/16 Type B					<b>T539D2201</b>
DN 100 PN 25/40 Type B					<b>T540D2201</b>
4" ASA 150					<b>T563D2201</b>
4" ASA 300 psi					<b>T564D2201</b>
DIN 28459 'TW 3' / DN 100					<b>T566D2201</b>
4" TTMA					<b>T568D2201</b>
undrilled Ø 230 mm	SS	Other on request.			<b>T521B4401</b>
o. Bohrungen Ø 230 mm <sup>**) </sup>					<b>T521B4401F</b>
DN 100 PN 10/16 Type B		8,7	19.2	<b>T539B4401</b>	
DN 100 PN 10/16 Type B <sup>**) </sup>		8,6	19.0	<b>T539B4401F</b>	
DN 100 PN 25/40 Type B				<b>T540B4401</b>	
DN 100 PN 25/40 Type B <sup>**) </sup>				<b>T540B4401F</b>	
DN 100 PN 25/40 Type E				<b>T538B4401F</b>	
4" ASA 150		8,9	19.6	<b>T563B4401</b>	
4" ASA 150 <sup>**) </sup>		8,9	19.6	<b>T563B4401F</b>	
4" ASA 300 psi		12	26.5	<b>T564B4401</b>	
4" ASA 300 psi <sup>**) </sup>		12	26.5	<b>T564B4401F</b>	
DIN 28459 'TW 3' / DN 100				<b>T566B4401</b>	
4" TTMA		2,5	5.5	<b>T568B4401</b>	

According to  
NATO STANAG 3756



<sup>\*)</sup> Type E (with spigot),  
EN 1092-1, see page 44

<sup>\*\*)</sup> Flange with standard thickness

<sup>1)</sup> PN 10/16/25/40 = EN 1092  
(types see page 44),  
ASA = ANSI B16.5 (150 o. 300 psi),  
DIN 28459 = old standard TW, 10 bar.  
TTMA = Truck Trailer Manufacturers Association

<sup>2)</sup> Material: Al = Aluminium, GM = Gunmetal,  
SS = Stainless Steel

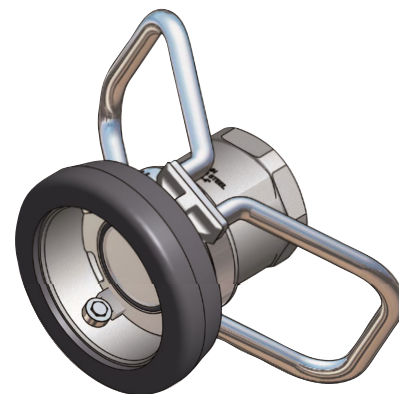
<sup>3)</sup> Standard seal FPM/FKM. Alternative  
materials, e.g. EPDM, Chemraz®, Kalrez®,  
NBR or HNBR on request

Viton® is a registered trademark of DuPont,  
DuPont Elastomers.

## 4" (Ø 164 mm) Hose Unit (Coupler) – Female Thread

Connection <sup>1)</sup> Inch/DN	Body Material <sup>2)</sup>	Seal <sup>3)</sup>		Weight ≈		Mann Tek Code No.	
		O-Ring	Thread Seal	kg	lbs		
F 4 BSP	AI	Standard: <b>FPM/FKM</b> (Viton®)	<b>PUR</b> (Polyurethane)	7,6	16.8	<b>S516B1101B</b>	
F 4" ASSPT					<b>S5136B1101B</b>		
F 4" NPT			—	7,9	14.2	<b>S517B1101</b>	
F 4" BSP	GM		<b>PUR</b> (Polyurethane)	17,5	38.6	<b>S516B2201B</b>	
F 4" ASSPT					<b>S5136B2201B</b>		
F 4" NPT			—	17,7	39.0	<b>S517B2201</b>	
F 4" BSP	SS		Other on request.	<b>PTFE</b>	15,6	34.4	<b>S516B4401A</b>
F 4" ASSPT						<b>S5136B4401A</b>	
F 4" NPT				—	15,9	35.0	<b>S517B4401</b>

According to  
NATO STANAG 3756



<sup>1)</sup> F = Female thread, BSP = EN ISO 228, NPT = ANSI B1.20.3,

ASSPT = American Straight Pipe Thread, identical to NPS. NPT male threads can be connected with ASSPT female threads.

<sup>2)</sup> Material: AI = Aluminium, GM = Gunmetal, SS = Stainless Steel

<sup>3)</sup> Standard seal FPM/FKM. Alternative materials, e.g. EPDM, Chemraz®, Kalrez®, NBR or HNBR on request

## 4" (Ø 164 mm) Coupler – Flanged Inlet

Flange <sup>1)</sup>	Body Material <sup>2)</sup>	Seal <sup>3)</sup>	Weight ≈		Mann Tek Code No.
		O-Ring	kg	lbs	
undrilled Ø 230 mm	AI	Standard: <b>FPM/FKM</b> (Viton®)  Other on request.			<b>S521B1101</b>
DN 100 PN 10/16 Type B			9,3	20.0	<b>S539B1101</b>
4" ASA 150			9,4	20.7	<b>S563B1101</b>
4" TTMA			8,7	19.2	<b>S568B1101</b>
DIN 28459 'TW 3' / DN 100			8,7	19.2	<b>S566B1101</b>
undrilled Ø 230 mm	Br				<b>S521B2201</b>
DN 100 PN 10/16 Type B					<b>S539B2201</b>
DN 100 PN 25/40 Type B			23,9	52.7	<b>S540B2201</b>
4" ASA 150			23,9	52.7	<b>S563B2201</b>
4" ASA 300 psi					<b>S564B2201</b>
4" TTMA					<b>S568B2201</b>
DIN 28459 'TW 3' / DN 100					<b>S566B2201</b>
undrilled Ø 230 mm	SS		16,1	35.5	<b>S521B4401</b>
o. Bohrungen Ø 230 mm **)					<b>S521B4401F</b>
DN 100 PN 10/16 Type B			16,1	35.5	<b>S539B4401</b>
DN 100 PN 10/16 Type B **)			16,1	35.5	<b>S539B4401F</b>
DN 100 PN 25/40 Type B			16,1	35.5	<b>S540B4401</b>
DN 100 PN 25/40 Type B **)					<b>S540B4401F</b>
DN 100 PN 25/40 Type E					<b>S538B4401F</b>
4" ASA 150			21,0	46.3	<b>S563B4401</b>
4" ASA 150 **)			21,0	46.3	<b>S563B4401</b>
4" ASA 300 psi			16,1	35.5	<b>S564B4401</b>
4" ASA 300 psi **)					<b>S564B4401F</b>
4" TTMA			8,7	19.2	<b>S568B4401</b>
DIN 28459 'TW 3' / DN 100					<b>S566B4401</b>

According to  
NATO STANAG 3756



<sup>\*)</sup> Type E (with spigot),  
EN 1092-1, see page 44

<sup>\*\*)</sup> Flange with standard thickness

<sup>1)</sup> PN 10/16/25/40 = EN 1092  
(types see page 44),  
ASA = ANSI B16.5 (150 o. 300 psi),  
DIN 28459 = old standard TW, 10 bar.  
TTMA = Truck Trailer Manufacturers  
Association

<sup>2)</sup> Material: AI = Aluminium,  
GM = Gunmetal, SS = Stainless Steel

<sup>3)</sup> Standard seal FPM/FKM. Alternative  
materials, e.g. EPDM, Chemraz®,  
Kalrez®, NBR or HNBR on request

Viton® is a registered trademark of  
DuPont, DuPont Elastomers.