

Marine loading arm – B0030

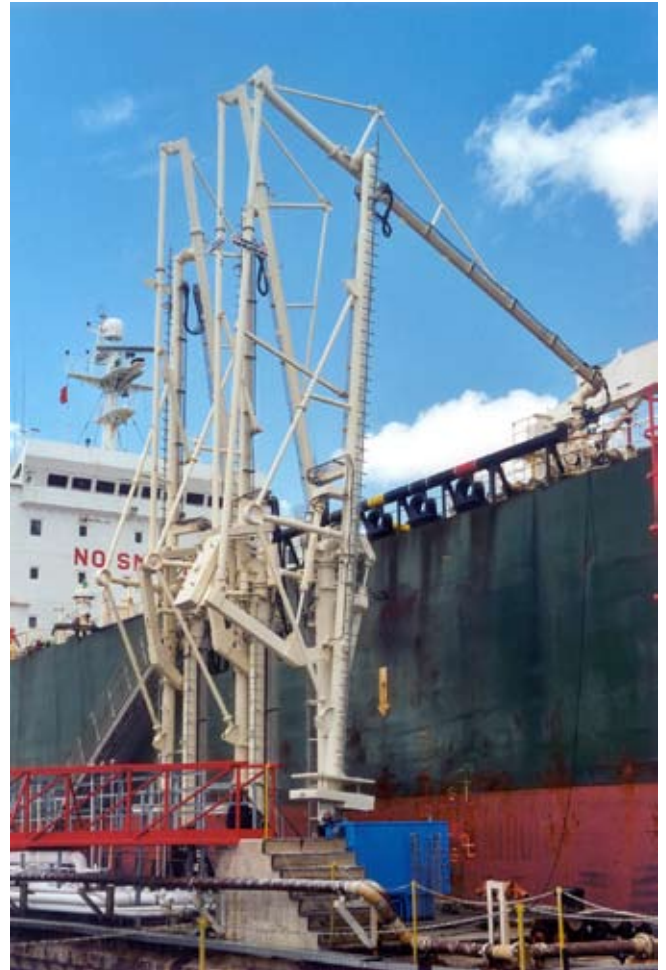
The B0030 marine loading arm is preferred when loading/unloading sea-going tanker ships and its capability has been proven within many years of trouble free operation world-wide.

The B0030 with its self supporting design includes a rigid link pantograph balancing system with independent counterweights direct linked to the inboard- and outboard arm. Thus providing that accurate balance is definitely ensured throughout all manoeuvring and connecting positions. The self supporting design provides not only high safety standards for easy operation but also lowest possible jetty loads, which minimises the cost for the jetty itself.

The advantages in comparison with hose loading facilities are ease of handling, higher availability/ flexibility, less man power and minimum maintenance required by maximum operational safety and minimised operational cost (cost of ownership).

The B0030 can be manually or hydraulically operated.

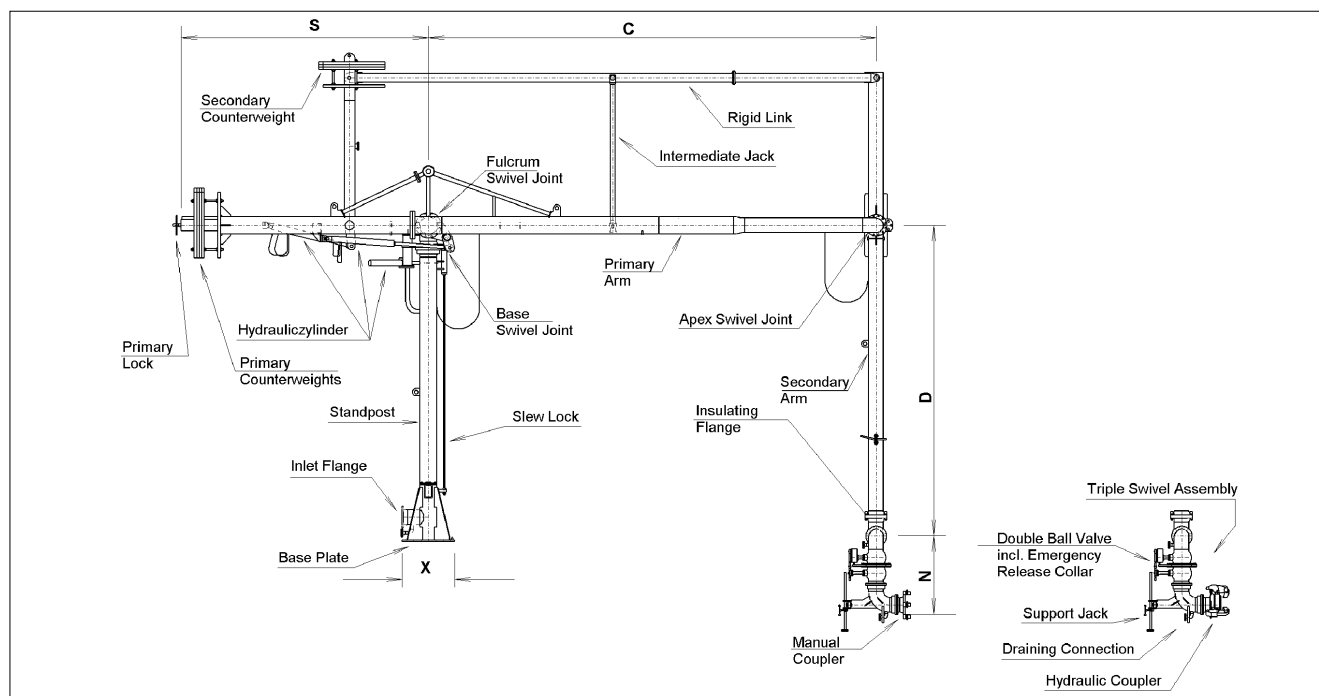
Additional equipment is available.



- sizes from 4" up to 16"
- pressure rates from PN 10 up to PN 40
- materials: carbon steel, low temperature steel, stainless steel
- temperature range: from -50 °C up to +200 °C
- customized solutions on request
- EMCO high performance swivel joints

B0030

Dimensions and technical data



Technical data (standard) – excl. emergency release system

NB	A + B	X	C	D	N	S	flow rate	weight	bending moment
	mm	mm	mm	mm	mm	mm	m ³ /h	kN	kN/m
4"	4500	1000	8000	8000	590	3900	300	62	103
6"	4500	1000	8000	8000	590	3900	600	63	105
8"	4500	1000	9000	9000	740	3900	1100	87	144
10"	6000	1500	10000	10000	890	5250	1700	119	230
12"	7000	1500	11000	11000	1040	6250	2500	157	340
16"	7000	1500	11000	11000	1310	6250	4000	224	500

Design

- fully balanced with independent counterweights for inboard and outboard arm
- self supporting system
- less men power due to low weight
- swivel joints either as welded-in or flanged version
- for transfer of mineral oil, chemicals and liquefied gases (incl. LNG)
- seals available in Buna-N, Viton, PTFE or any other specific materials

Accessories

- envelope warning system
- drainage connections
- emergency release system (ERS)
- hydraulic operation
- hydraulic quick coupler
- insulation flange
- manual quick coupler
- nitrogen purge line
- purge line
- vacuum breaker
- vapour return line

Fluid Transfer Division

EMCOWHEATON

A Gardner Denver Product

SMAILE-PLUSS SIA. LV1007. 79A Slokas str. Riga. Latvia +37129214098

Whilst the content of this leaflet has been edited with the greatest care, we are not liable for any errors and/or omissions. Subject to change without notice.

EMCO WHEATON GmbH
Emcostraße 2-4 · 35274 Kirchhain · Germany
Phone +49 6422 84-0 · Fax +49 6422 5100
www.emcowheaton.com · sales-de@emcowheaton.com